

# Streamlines

WINTER 2016-17

Volume 53, Issue 1



2016 ANNUAL REPORT



**Our Mission: to protect, preserve, and restore the natural waterways of northern Chester County. We inspire, educate, and involve our community to make a difference for this generation and for generations to come.**

Welkinweir: "where sky meets water"

Our headquarters in East Nantmeal Township is a spectacular property which showcases our organization's mission. Originally the home of founding members Everett & Grace Rodebaugh, the 197 acres of permanently preserved land feature a 55-acre arboretum, wetlands, meadows, and forest habitats. The property hosts many of our environmental education programs, along with a growing collection of sustainability demonstration projects.

1368 Prizer Road  
Pottstown, PA 19465  
Phone (610) 469-4900  
Fax (610) 469-4990  
Email [gva@greenvalleys.org](mailto:gva@greenvalleys.org)  
Web [www.greenvalleys.org](http://www.greenvalleys.org)

Board Officers  
Allen Heist, President  
Chris Orzechowski, Vice President & Secretary  
Don Hans, Treasurer  
Ed Bacon, Ex Officio

Staff  
Victoria Laubach, Executive Director  
[victoria@greenvalleys.org](mailto:victoria@greenvalleys.org)  
Elaine Armbrust, Bookkeeper  
[elaine@greenvalleys.org](mailto:elaine@greenvalleys.org)  
Michael Bullard, Science Coordinator  
[mikeb@greenvalleys.org](mailto:mikeb@greenvalleys.org)  
Eric Hughes, Field Naturalist  
Kelsey Stanton, Communications Coord. - [kelsey@greenvalleys.org](mailto:kelsey@greenvalleys.org)  
Margot Taylor, Restoration Coord. & Environmental Educator  
[margot@greenvalleys.org](mailto:margot@greenvalleys.org)  
Dawn White, Education Coordinator  
[dwhite@greenvalleys.org](mailto:dwhite@greenvalleys.org)

Cover Image: An icy close-up of the French Creek's swirling waters.  
© Ed Bacon, 2013.

# FROM THE DIRECTOR 2016 ANNUAL APPEAL

## As we enter our 53rd year we are a strong and growing organization.

We are strong with the volunteers who have always been the backbone of Green Valleys. We are strong financially. We are strong in the growing suite of programs and services which take our Mission to the Watersheds, while also reducing administrative costs. And we have used our strengths over the past half century to achieve many important gains for our environment and quality of life.

**But these gains cannot be taken for granted.** The rapid expansion of the local economy and associated development has always meant new stormwater issues - issues which our organization along with many others are dedicated to identifying and preventing. Now, at the beginning of 2017, we face uncertainty about the continuity of decades of clean water policy at the national level. How and when this will affect state and local policy is unclear; **what is abundantly clear is that Green Valleys' local role in protecting clean water must grow if we are to meet these new challenges.**

Yours in the watersheds,



Victoria Laubach  
Executive Director

## Welcome to our new Board members!

**Melissa Albright** is a lifelong nature lover and conservationist, influenced early on by her having a "great time!" at Green Valleys' Summer Camp at the Meeting House in Birchrunville. Melissa volunteers for our annual Stream Day Clean-Up.

**Rob Blumenthal** grew up in West Vincent Township, adjacent to the Bryn Coed Farm. He has many fond memories of exploring the open spaces and spending lots of time in the Birch Run and French Creek. His parents were active volunteers (including with Green Valleys), and he too wants to give back to the community by being involved. Rob has completed the Schuylkill Water Stewards program and volunteers with the monitoring program.

**Glen Hill**, who lives along the French Creek, understands the link between what happens on the land and its effect on the streams. He felt it was time to get involved with the community personally and locally. Glen looks forward to helping with our land programs, including restoring streamside forests.

**Christopher Orzechowski** is a familiar name at Green Valleys, having served on the Board a number of years ago. His work in the environmental field as well as his volunteer service during Stream Day Clean-Ups make him a welcome addition back to the Board.

Thank you for helping us achieve our 2016 year-end goal!

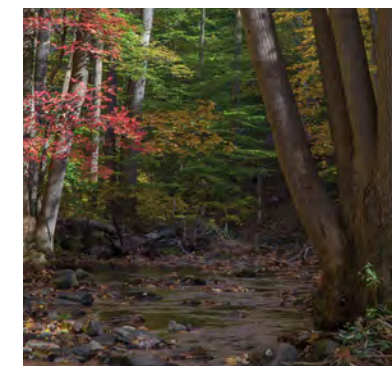
We are launching three new initiatives which will strengthen the programs and services Green Valleys is providing through our Welkinweir headquarters. **Thanks to your contributions, we have exceeded our Annual Appeal goal of \$40,000!**

Your gifts to our 2016 Annual Appeal are tax-deductible, and directly support the following initiatives:



### Environmental Science & Education Center Conceptual Design

We are initiating the design process to transform our existing education building to accommodate our growing environmental education and science programs. This new center will be the base upon which the next generation of Green Valleys educational programs will be built.



### Open Space Additions

We have an excellent opportunity to permanently protect forested land adjacent to Welkinweir through fee simple purchase. The parcel has an Exceptional Value tributary which connects Beaver Run to Welkinweir, and provides clean water and habitat for at least one wildlife species of concern. This habitat will be added to Welkinweir's protected natural lands, and will also protect a segment of the 140-mile-long Horse-Shoe Trail.



### Biodiversity Monitoring Stations

GVWA is joining a new and innovative, multi-national bird tracking network, through installation of a solar-powered receiver station at Welkinweir that will capture radio transmitter signals. Increasing automated data collection is an important trend in environmental monitoring of all types -- including water quality. More information on this network is available on page 8.

**We are so very grateful for your generous support!**





# MAKING THE LAND-WATER CONNECTION

## Accomplishments

### Engaging Professionals and Stakeholders

#### Green \$aves Green Workshop

Green Valleys worked with the Partnership for the Delaware Estuary and the Pennsylvania Environmental Council to organize an informative workshop on green stormwater infrastructure for professionals in the fields of engineering, landscape architecture, planning, and municipal government. The workshop presented local case studies in successful, nature-based stormwater management and smart planning practices that encourage cost-effective, municipality-wide conservation practices.

#### Manure Management Workshop

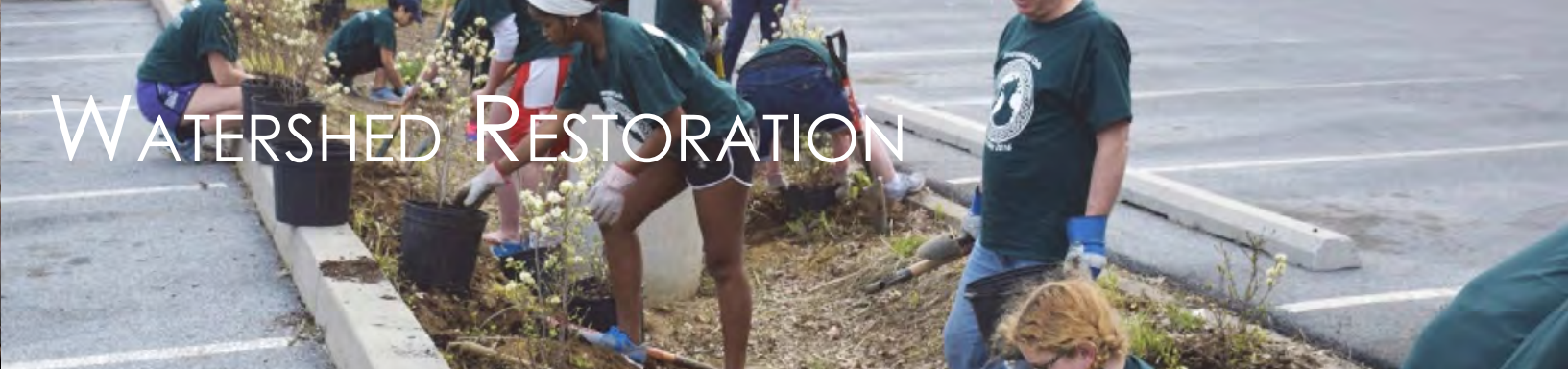
Together with the Chester County Conservation District, Green Valleys developed and presented a manure management workshop to farmers, who then applied the knowledge gained to complete a manure management plan for their own facilities. Manure management is an important water quality protective measure: by preventing manure runoff from fields and pastures, farmers can protect streams from harmful bacteria and other pollutants.

#### Schuylkill Watershed Congress Presentation

Our staff presented at the 2016 Schuylkill Watershed Congress, an annual program organized by the Delaware Riverkeeper Network that advances the best available information and techniques for protecting and restoring watersheds, on the topic of quantifying the benefits of green infrastructure. The Schuylkill Watershed Congress attracts regional professionals, students, government officials, and individuals who are concerned with water quality in the Schuylkill River Watershed.

#### Stormwater Best Management Practices Tour

Green Valleys & the Partnership for the Delaware Estuary organized a stormwater project tour for property managers, municipalities, and other interested individuals. 25 participants attended the tour and visited examples of innovative stormwater management and stewardship practices, including rain gardens, naturalized stormwater basins, rainwater infiltration best management practices, and sites utilizing eco-friendly maintenance strategies.



# WATERSHED RESTORATION

## Accomplishments

### Crabby Creek Riparian Buffer Completed

This year, we completed streamside forest restoration on a tributary to Valley Creek with our partners, the Valley Forge Chapter of Trout Unlimited and Tredyffrin Township. The trees planted along Crabby Creek's banks will help filter pollution, prevent erosion, and provide cooling shade for the waterway and its wildlife.

### Green Stormwater Infrastructure Greener School Campuses

As part of our PADEP *Growing Greener* Grant, we are working with two universities in the Valley Creek watershed to improve rainwater capture and wildlife habitat on their campuses through stormwater basin naturalization.

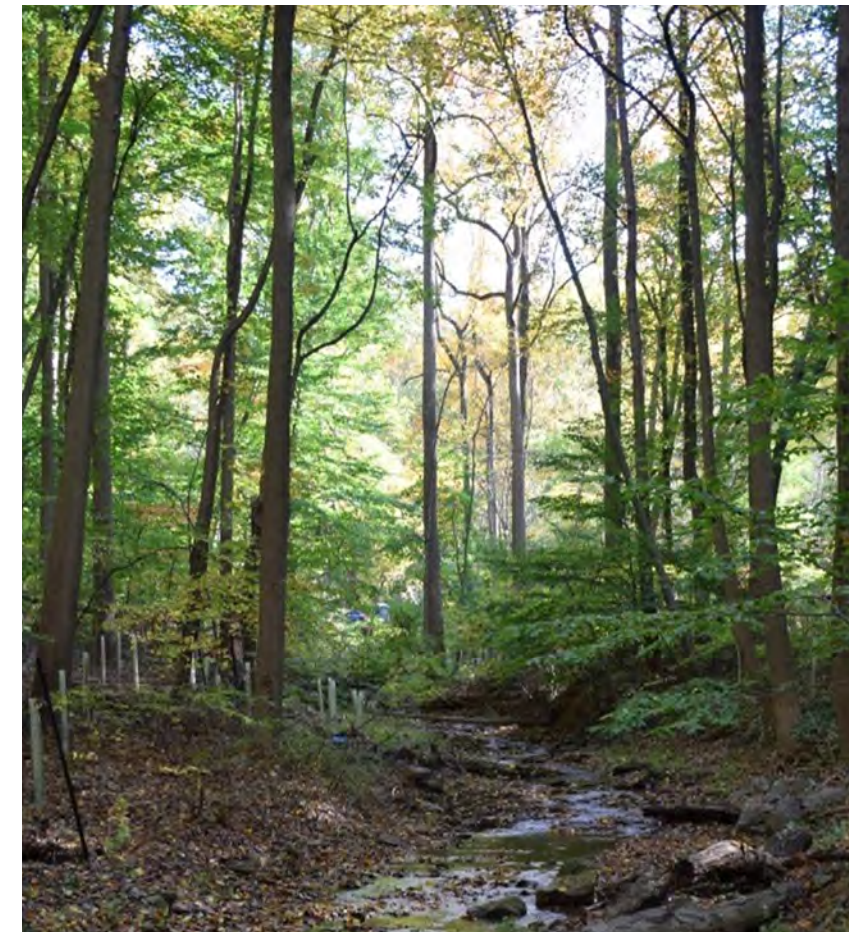
Phoenixville Area Middle School students were awarded a 2016 Schuylkill Scholastic Drinking Water Award by the Schuylkill Action Network for their work in creating a bioswale on the school campus. We will expand on the school's efforts to manage stormwater in 2017 with a new rain garden.

### Improving HOA Stormwater Management

Green Valleys is also working with Princeton Hydro engineering firm to develop a stormwater management plan for the Weather-stone Homeowners' Association in West Vincent Township. This plan will help the Weather-stone development capture and filter more of its stormwater, and will serve as a template for other HOAs to make their properties "greener" as well!

### Stream Clean-ups & Community Beautification

Forty five volunteers removed an estimated 2,000 pounds of litter from the French and Pickering Creeks during three clean-up events this year. Our hard-working volunteers also removed invasive plants and maintained community open space trails.



## SINCE 2010:

WE HAVE MOBILIZED **OVER 1,000 VOLUNTEERS** THROUGH OUR WATERSHED RESTORATION PROGRAM.

NEARLY **7,500 TREES AND SHRUBS** HAVE BEEN PLANTED ALONG STREAMS IN THE FRENCH CREEK, PICKERING CREEK, AND VALLEY CREEK WATERSHEDS - **REFORESTING OVER 8,000 LINEAR FEET OF STREAMBANKS!**

**OVER 6,500 POUNDS OF LITTER** HAVE BEEN REMOVED FROM THE FRENCH AND PICKERING CREEKS BY OUR VOLUNTEERS!





# WATERSHED SCIENCE ENVIRONMENTAL EDUCATION



## Accomplishments

### Advanced Assessment Capabilities

Green Valleys has improved our ability to assess stream health and prioritize watershed protective action using GIS modeling software and “green” lab analytical methods. Computer modeling, augmented with data from stream samples collected at **over 30 sites**, allows us to quantify water quality impairments; simulate restoration scenarios; and create an accurate, overall picture of our watersheds’ health. We developed and are utilizing the following tools to increase our efficiency and impact:

**Full-resolution Stream Mapping & Land Cover Analysis.** We have developed accurate GIS representations of all perennial streams in the French, Pickering, Pigeon, Hay, and Sixpenny Creeks - including the small headwaters streams that are often missing from other GIS stream networks. Pairing these networks with current land use information helps us pinpoint high-priority conservation areas & the sources of potential stressors, as well as evaluate streamside habitat condition.

**High-resolution Hydrological Modeling.** Simulating stream flow across entire watersheds allows us to develop predictive models for sediments and other stressors during both low-flow (i.e., during summer or drought conditions) & storm conditions. We calibrate these models for accuracy using the results of our water quality sampling.

**“Green” Lab Analytical Methods.** Conventional laboratory analytical methods that utilize corrosive and/or heavy metal materials, and can generate hazardous waste products. Our in-house water quality monitoring lab uses methods that don’t require the use of these materials.

### Schuylkill Water Stewards (SWS) Volunteers

With our Delaware River Watershed Initiative partners, we have trained **40 volunteers** in the Schuylkill Water Stewards program who participate in regular assessments of water quality and are knowledgeable advocates on stream health in the community.

### Monitoring Erosion with Photogrammetry

Thanks to photogrammetry, we can monitor streambank erosion at several areas of interest by creating precise, 3-D models of each site, and measuring changes over time. Photogrammetry software assembles highly accurate photographic models using the GPS coordinates of a series of photographs; comparing streambank measurements in these models over time allows us to track erosion with a high degree of accuracy.

Above: GIS land cover analysis within 150 feet of French Creek. Below: SWS volunteers collect macroinvertebrates at Pine Creek.

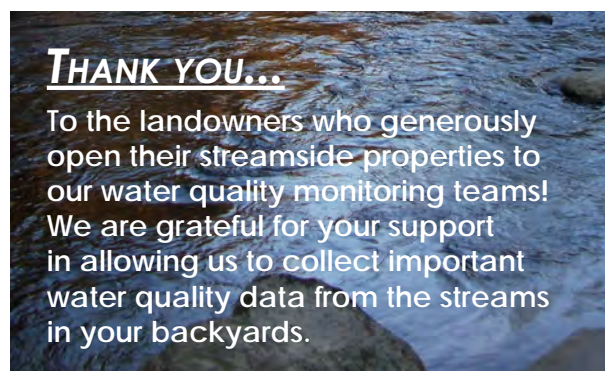


### Get involved in your watershed!

Join the Spring 2017 Schuylkill Water Stewards class and learn about issues facing local streams.

The training program begins **Saturday, March 18**, and will prepare you to monitor the impacts of issues specific to our watersheds, through hands-on learning that maximizes time spent along the stream. After completing five Saturday classes in March and April, Schuylkill Water Stewards participate in quarterly sampling to collect water quality data. Additional volunteer opportunities can include stream clean-ups and other restoration activities.

The deadline to register is **March 8**. Learn more about the program and sign up at [schuylkillwaterstewards.org](http://schuylkillwaterstewards.org).



### THANK YOU...

To the landowners who generously open their streamside properties to our water quality monitoring teams! We are grateful for your support in allowing us to collect important water quality data from the streams in your backyards.

## Accomplishments

### Expanding School & Family Nature Programs After School Environmental Clubs

Since Fall 2015, our After School Environmental Science and Nature Awareness Clubs have served **nearly 200 students** at schools in the Owen J. Roberts, Phoenixville, and Pottstown School Districts. Two more Pottstown schools participated in the program this year, and program staff for the elementary-level clubs increased to include volunteer, high school student assistants. The clubs promote awareness and stewardship of the natural environment to elementary and middle school students, through outdoor activities and wildlife study.

### Little Sprouts Library Nature Classes

These preschool programs expanded to the Chester Springs Library in 2015, and now serve **over 200 children and their parents** each year.

### Community Nature Awareness Programs at Welkinweir

A new wildlife study and conservation program was introduced at Welkinweir this spring: *Up Close with Birds of Prey* features live hawks and owls, followed by a bird watching walk through the nature preserve. Two new dates were added to meet popular demand for our annual *Owl Prowl*. **Over 100 participants** came out to learn about owls’ unique survival adaptations; meet live, captive owls; and listen for owls in the wild in Welkinweir’s natural areas.

### Summer Nature Day Camp is Growing

**236 children from over 140 families attended Camp in 2016 - a two-year high for attendance!**

### Summer Nature Camp Scholarship Fund

The Fund received a **record \$2,179 in donations** in 2016, which enabled us to award scholarships to **12 children**. The purpose of the fund is to provide access to Camp to children who might not otherwise have the opportunity to attend.

### New Grant Funding

- The Phoenixville Community Health Foundation provided a Health Education Mini-Grant towards Little Sprouts Library Nature Classes at the Phoenixville Public Library.
- Two new grants - a 2-year, \$12,000 grant from the Claneil Foundation and a \$1,200 grant from the Society of Women Environmental Professionals of Greater Philadelphia - supported this year’s After School Environmental Clubs.



Peter Van Bennekom



The following generous individuals donated programming supplies for our education programs:

- |                   |                     |
|-------------------|---------------------|
| The Cody Family   | Dr. Elaine Husted   |
| Ed Fitzsimmons    | Janet & Mike Tillou |
| Christine Gephart | Phil Witman         |

***Thank you!***





## Accomplishments

### Historic Restoration & Capital Improvements

Thanks to generous funding from the National Trust for Historic Preservation's Louis Appell Fund, the Pennsylvania Historical and Museum Commission's Keystone Preservation Fund, and The Historical Organ Trust, **several critical restorations are nearing completion.** The roof of the estate house has been replaced with durable, environmentally friendly material, and new railing will be installed that will replicate the appearance of the original architecture, thanks to the woodworking talents of Justin Cannon. The circa-1928 Skinner pipe organ is in the final stages of restoration, and we are working with Jeffrey A. Miller Catering to update the facilities for weddings.

### Bioacoustic Network in Development

We are **piloting studies to expand our knowledge of migratory birds at Welkinweir**, by combining citizen science and bioacoustics, or the study of sounds made by living creatures. The next step in monitoring migratory birds is deploying our solar-powered network of bioacoustic recorders (the photo *below* shows one of the solar panels powering the network atop our kiosk). The recorders capture nearby sounds which are then modeled according to frequency by computer software. Staff analyzes the sound models to locate bird song and identify the species recorded. This data will be combined with observations from our weekend bird walks to create a more complete picture of Welkinweir's biodiversity.



### Volunteers & Interns

Nearly **100 interns-representing 10 public gardens and arboreta from around the Philadelphia region-** contributed their time and effort to improve the gardens and natural areas at Welkinweir this summer. In addition to tidying garden beds and removing invasive plants, they helped us to recover one of the Rodebaugh's original gardens across the pond from the spring house! Their hard work was part of the Regional Intern Outreach Day, organized by members of the American Public Gardens Association. We are grateful to our APGA partners for their help in organizing the day, and for the hard work of their staff and interns. Together with our own interns, volunteers, and staff, they were instrumental in maintaining the arboretum's collections and improving habitat. **Thank you!**



# SUPPORT

We gratefully acknowledge the support of the following individuals, foundations, corporations, and government agencies whose contributions enable GVWA to pursue our Mission:

#### \$10,000 and Above:

Anonymous Foundation  
The Clancil Foundation  
The Frederick J. Cooper Organ Restoration Fund  
Janssen Biotech, Inc.  
Carl & Sylvia Landis  
The George & Miriam Martin Foundation  
The Historical Organ Trust  
National Trust for Historic Preservation  
Partnership for the Delaware Estuary  
Pennsylvania Dept. of Environmental Protection  
Lawrence & Harriet Stone  
USDA-NRCS  
William Penn Foundation

#### \$5,000 and Above:

PA DCNR/Natural Lands Trust- Schuylkill Highlands CLI  
Pennsylvania Historical and Museum Commission  
Spurlino Family Trust

#### \$1,000 and Above:

ArbNet  
Ed Bacon & Jane Nadelson  
First Niagara Financial Group  
George Graham & Suzanne Roth  
Darrell S. Guest  
The H.O. West Foundation  
Johnson & Johnson  
Kate Svitek Memorial Foundation  
Keep Pennsylvania Beautiful  
National Penn Bank  
Phoenixville Area School District  
Phoenixville Community Health Foundation  
The Philadelphia Unit of the Herb Society of America  
The Pottstown Area Health & Wellness Foundation  
The Society of Women Environmental Professionals of Greater Philadelphia  
Valley Creek Trustee Council  
West Vincent Township  
XL Catlin  
David & Cherie Zelinger

#### \$750 and Above:

Robert & MaryJane Blumenthal  
Lloyd Cole  
Donald & Judi Hans  
James & Joan Moore  
The Owen J. Roberts Education Foundation

The Vanguard Foundation

#### \$500 and Above:

Paul & Cynthia Black  
Roy Cannon  
French & Pickering Creeks Conservation Trust  
John Funk & Elaine FitzSimons  
Benjamin James & Joan Baker  
Peter & Elaine Klose  
Phoenixville Federal Bank & Trust  
Sara Shick  
Stan & Carol Stubbe

#### \$250 and Above:

Caroline W. Amidon  
Barry & Theresa Bentley  
James Bergey & Donna Brennan  
Kimberly Billesbach  
Chester County Library System  
CliftonLarsonAllen LLP  
Caryl Ann & Stephen Cooper  
Fred & Debbie Eddinger  
John P. & Mary Ellen Eldridge  
F.A. Bartlett Tree Experts  
GreenWeaver Landscapes, LLC  
Vincent & Donna Hartnett  
L. Stockton & Eleanor Illoway  
Joseph & Diana Kelly  
Aldo & Anna Magazzeni  
Marchwood Dental Associates  
John Matthews & Nancy Bartley  
Natalie Mess-Edwards  
Arthur P. & Marjorie L. Miller  
Dennis & Lysa Monteiro  
Christopher Orzechowski  
Pennsylvania Recreation & Park Society, Inc.  
John Quinlan  
Senator John C. Rafferty, Jr.  
Dr. Gary Riggs  
Charles & Barbara Spackman  
Ray & Allyson Stegmaier  
Stell Environmental, Inc.  
Glenn & Nancy Wenger  
Dr. Ruthven & Nancy Wodell

#### \$100 and Above:

June & Bruce Allred  
Frank & Desiree Altieri  
Harry B. & Susannah Archinal  
Chris & Sally Barron  
Reinhold & Diana Bender  
Peter & Helena Benton  
Thomas & Kristen Bissinger  
David & Mary Blye  
Scott & Adrienne Boyance  
Richard & Mary Brigandi  
Lee & Pat Calhoon  
Carnevale Eustis Architects

Chester County Foxhunters Assoc.  
Richard & Maria Dalton  
Kell & Kate Damsgaard  
Joyce Douglas  
Bradley & Ann Dyer  
George & Martha Edwards  
John W. & Connie Erbe  
Chip & Kate Farnham  
Frank B. & Terry Foster  
Mark W. & Hope Foster  
Ralph T. & Julie Geer  
Doug & Jean Gessl  
Angela Glysing-Jensen  
Peter & Judy Goodman  
David & Joan Gottier  
Ronald & Lyn Graham  
Allan & Peggy Greenwood  
Louis & Jeanne Guernsey  
Mary Ann Heist  
Ralph D. & Terry Heister  
John & Lisa Hevner  
Glen & Bridgit Hill  
Richard W. Hurst  
Dr. Elaine Husted  
Independent Monitoring Corp.  
John & Maria Jacobs  
Melissa Jacono  
Robert & Harriet Johnston  
Jeffrey & Joanne Jones  
John Krause  
Nicholas & Trisha Leh  
Dr. Cary Leptuck  
John & Amy Lignelli  
Don & Joan McWilliams  
Robert L. & Joanne Moser  
Gary & Anne Murphy  
Glenn & Gale Nester  
Derek J. Ottinger  
Allan & Linda Pallay  
Penn Liberty Bank  
Zoe Perkins  
The Pfizer Foundation  
Ron & Debbie Pook  
Jo-an & Larry Rechtin  
Thomas A. Reeves  
Robin Robb  
Anna Sasso  
Harry L. Saunders  
Dr. Lester Schwartz  
Deborah & Mark Shryock  
Siana Bellwoar & McAndrews LLP  
Jack J. & Barbara Sosiak  
Gary & Kathe Spohn  
Duane & Colleen Stanton  
David & Claudia Steckel  
Brian & Kathy Taylor  
Theurkauf Design & Planning  
Mitsie Toland

Donald A. & Sharon Trevo  
Twin Valleys Garden Club  
Linda & Floyd Walters  
Robert E. & Marilee Ward  
Chris & Pat Washburn  
Robert Washburn  
Susan & Ted Weicheld  
Larry & Debbie Westfall  
Dawn White  
Cathie Whitlock  
Penelope Wilson  
Jeff Wynn & Linda Condy

#### Community In-Kind & Volunteer Support:

American Public Gardens Assoc.  
Audubon Pennsylvania  
Cadient Group  
Chester County Conference & Visitors Bureau  
Chester County Conservation District  
Chester County Water Resources Authority  
The Community Courier  
Cub Scouts Pack 104  
Delaware Riverkeeper Network  
Girl Scout Troops 743, 4026, 4082, 4439, 4510, 7071, 7287, 7411, 41035 & 41462  
Great Valley Nature Center  
Greater Philadelphia Gardens  
Immaculata University  
Jeffrey A. Miller Catering  
Keep Pennsylvania Beautiful  
Link Davis  
The Party Center  
Pennsylvania Environmental Council  
Owen J. Roberts School District  
PennFuture  
Penn State University Great Valley  
Phoenixville Green Team  
Pottstown School District  
Schuylkill River National & State Heritage Area  
Sean O'Donnell & Associates  
Siemens  
Stroud Water Research Center  
Tredyffrin Township EAC  
Upper Providence Elementary  
Valley Forge Audubon Society  
Valley Forge Trout Unlimited  
West Pikeland Park & Recreation  
Willistown Conservation Trust  
XL Catlin

*We sincerely apologize if your contribution is not listed here!*



# PEOPLE FINANCIAL STATEMENT

## Board of Directors

### Officers

<b>President</b>	<b>Allen Heist</b> , Project Manager, Stell Environmental Enterprise (ret.) <i>Volunteer Affiliation: Horse-Shoe Trail Conservancy</i>
<b>Vice President &amp; Secretary</b>	<b>Christopher Orzechowski</b> , Geologist, Keating Environmental Management <i>Volunteer Affiliation: Political Committee Leader</i>
<b>Treasurer</b>	<b>Don Hans</b> , Director of Commercial Banking, National Penn Bank <i>Volunteer Affiliation: St. Peter's Episcopal Church Stewardship Committee</i>
<b>Ex Officio</b>	<b>Ed Bacon</b> , Software Programmer, Vanguard (ret.) <i>Volunteer Affiliation: East Nantmeal Planning Commission</i>

### Board of Directors, Present

<b>Melissa Albright</b> , Attorney, Wells, Hoffman, Holloway & Medvesky LLP <i>GVWA</i>	<b>Glen Hill</b> , Senior Director Quality, HS Compliance, Siemens <i>GVWA</i>	<b>James McQuillan</b> , Director, Healthcare Analytics, Siemens <i>Delaware Valley Children's Charity</i>
<b>Robert Blumenthal</b> , Planning Manager, North America Planning & Central Operations, HERE <i>Schuylkill Water Stewards</i>	<b>Carl Landis</b> , Certified Financial Planner, Main Line Financial Advisors <i>Pottstown SCORE Chapter 594</i>	<b>Marjorie Miller</b> , Partner, Bylines Editorial Services (ret.) <i>American Red Cross Retiree Association</i>

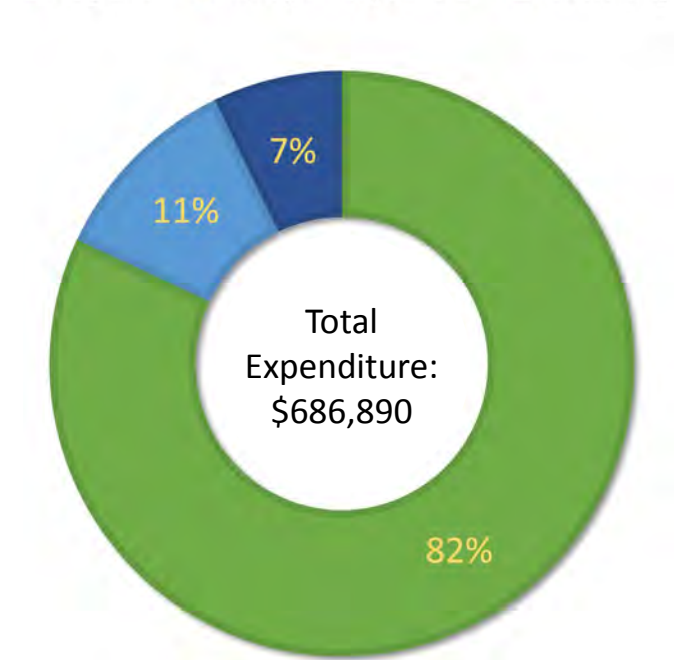
### Past Board Members (2010-2016)

Caryl Ann Cooper	John Funk	John Matthews
Debbie Eddinger	Whitney Graham	Lawrence Newman
John Eldridge	Jim Kerr	Jo-an Rechten
Mark Eshbacher	Richard Koster	Harriet Stone
Elaine FitzSimons	Rob Kratz	David Zelinger

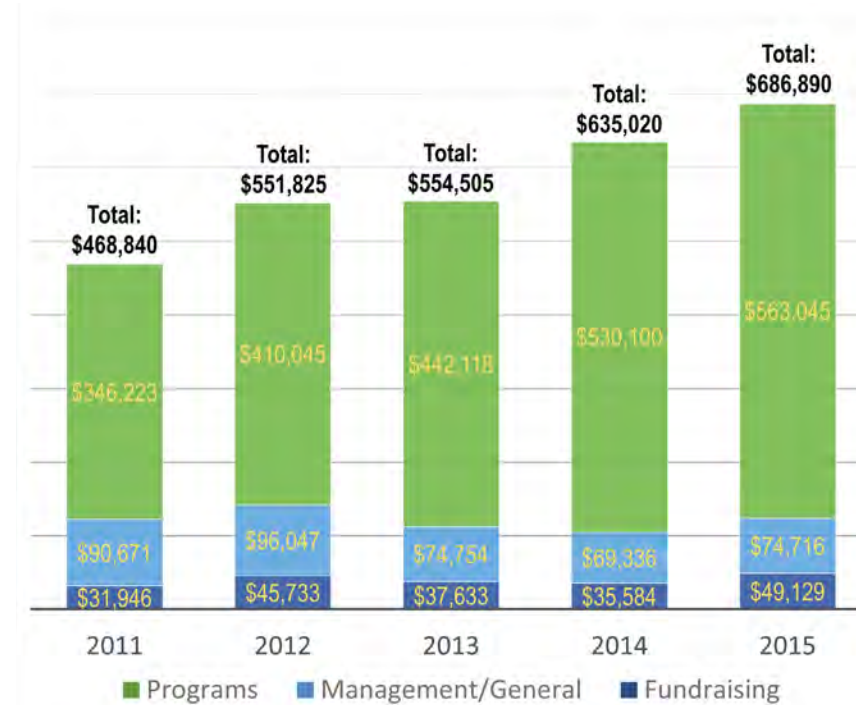
## Volunteers

Melissa Albright	Lindsey DiValerio	Dr. Elaine Husted	Michael Minnich	Harriet Stone
Caroline Amidon	Debbie Eddinger	Benjamin James	Heather Moore	Margot Taylor
Doug Anestad	Chris Edginton	Suzanne Jefferis	James Moore	Christianne Torres
Ed Bacon	Jon Fetter	Jeffrey Jones	Ashley Oplinger	The Vadner Family
Patrick Bailey	Shanlee Fisher	Tom Kalusky	Kelly Peterson	The Varga Family
Dr. Joan Baker	Elaine FitzSimons	Diana Kelly	Carol Petrow	The Weicheld Family
Christopher Barber	Michael Gale	Tim Lander	Linda Raifsnider	Eddie Welborn
Neil Black	Aerin Geyer	Carl Landis	Katherine Ridella	Debbie Westfall
Robert Blumenthal	Kelly Haile	Sylvia Landis	Donald Robinson	Larry Westfall
Elena Bozhko	Austin Harmon	Victoria Laubach	Tarajee Samuels	Dawn White
Michael Bullard	Allen Heist	Pat Lenger	Douglas Sanders	Matt White
Tim Burley	Brandon Heist	John Lisowski	Kurt Schneidmiller	Cathie Whitlock
Linda Condy	Jane Helm	Julie Lisowski	Adam Schraegle	Nancy Wilson
Caryl Ann Cooper	Ellen Herr	Nancy Long	Nathan Scott	Nancy Wodell
Hannah Cummons	Terry Herr	Brian MacElroy	Leslie Siebert	Jeff Wynn
Bob Cunningham	Glen Hill	Daniel Martinez	Anthony Spurlino	Christine Zerbe
Maria Dalton	Eric Hughes	John Matthews	Tom Szwech	Kristi Zoll
Richard Dalton	Frank Hultslander	Anne-Marie McMahon	The Stanton Family	

**FYE 2015 Expenditure\***



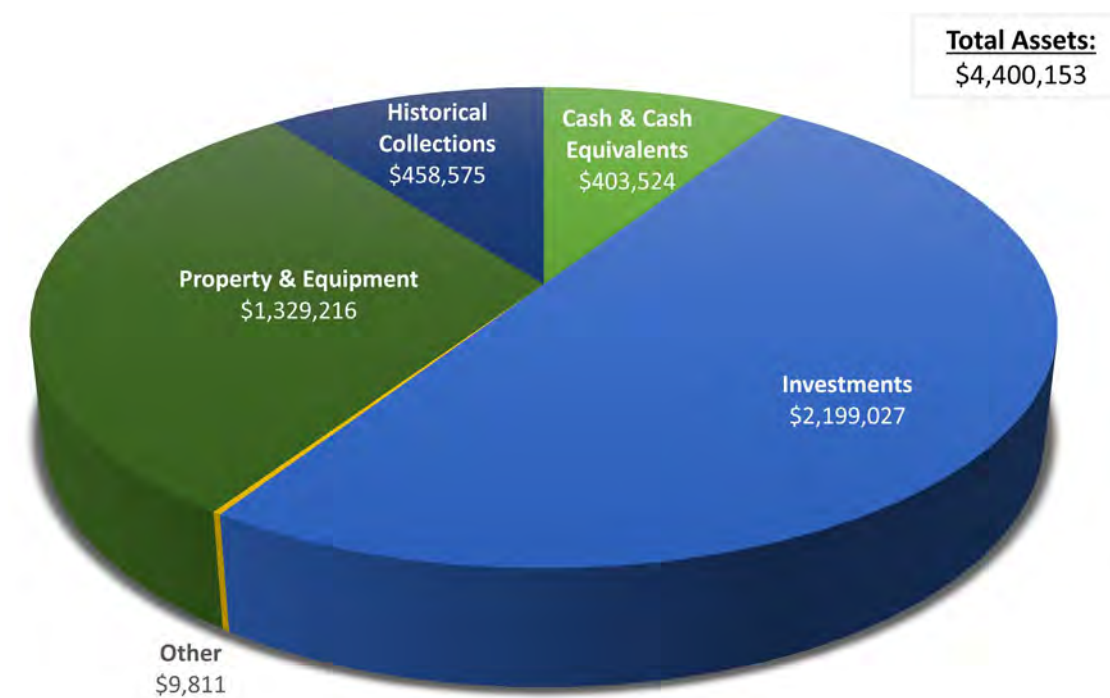
**Five-Year Growth in Programs & Services**



## Organizational Capacity

Green Valleys Watershed Association has made significant growth over the past several years. The support we receive from foundations, government programs, businesses, and our dedicated and passionate members throughout the community is gratefully accepted and wisely used, to maximize the impact of our programs throughout the community.

**Assets, FYE 2015\***



\* Fiscal Year Ending September 30





The health of our watersheds has been our focus for over 50 years.

Green Valleys Watershed Association is located in northern Chester County, Pennsylvania, where our scenic watersheds are comprised primarily of Exceptional Value (EV) and High Quality (HQ) waters. These streams are in the top tier in Pennsylvania. They are a precious resource.



1368 Prizer Road  
Pottstown, PA 19465

[www.greenvalleys.org](http://www.greenvalleys.org)

610-469-4900

Already renewed your membership? Share with a friend!

*Please join us!*

Your membership is an investment in clean water and healthy watersheds, for now and for future generations.

Name \_\_\_\_\_  
Address \_\_\_\_\_  
City, State, Zip \_\_\_\_\_  
I would prefer to pay with:  Check (payable to GVWA)  
 Visa  MasterCard  Discover  American Express  
Credit Card # \_\_\_\_\_  
Exp. \_\_\_/\_\_\_ CID \_\_\_\_\_ Phone\* \_\_\_\_\_  
Email address\* \_\_\_\_\_

*\*Phone & email needed to process credit card payments. We do not share your information with other charitable organizations.*

Detach this form and mail with payment to:

**Green Valleys Watershed Association**  
1368 Prizer Road, Pottstown, PA 19465

Online membership also available at  
[www.greenvalleys.org/support](http://www.greenvalleys.org/support)

*Dues and contributions are tax-deductible. Green Valleys is a registered charitable organization. Copies of registration/financial information is available by calling 1-800-732-0999. Registration does not imply endorsement.*

**MEMBERSHIP** includes newsletter subscription, notice of special events and programs, and reduced rate to special programs, workshops, and Summer Nature Day Camp.

**Membership levels (please check one):**

- Individual.....\$45
- Family.....\$60
- Naturalist.....\$100
- Environmentalist.....\$250
- Protector.....\$500
- Preservationist.....\$750
- Steward.....\$1,000

I am a:  New Member  Renewing Member

I am interested in including GVWA in my legacy planning.

Please notify me of GVWA volunteer opportunities:

Email: \_\_\_\_\_